



Stu/D/O Architects

www.stu-d-o.com

Recent Projects
May 2019



stu/D/O architects

Stu/D/O Architects is a young Bangkok-based architectural design studio whose practice traverses the fields of architecture, urbanism and sustainable design. Grounded in the belief that architecture should consider all layers of physical and cultural distinctness in each site, the office does not adopt a fixed design process, but instead focus on a strong studio culture that pool together fresh ideas to result in new design approaches and possibilities of creating space. Founded under the desire to create architecture that sustains itself and the community along with it, Stu/D/O's work reflects the importance of the human experience within the creation, and complexities of constructed environments.

Since its establishment, Stu/D/O has received various awards and international recognition for their architectural work, earning their reputation as one of Thailand's notable architecture design offices. Most recently, Stu/D/O's projects received awards from World Architecture Festival (WAF) for two consecutive years: Inter-Crop Headquarter in the 2018 Office Building Category and Naiipa Art Complex in the 2017 Mixed Used Category. In addition, Naiipa was selected for the 2017 Honorable Mention from The Arcasia Awards for Architecture, the 2016 Citation Award from the Association of Siamese Architects (ASA), along with the 2015 Building of the Year by Wallpaper* Magazine.







Asia Pacific 2016 Award Winners

★★★★★

Best Residential High-rise Architecture Thailand
The Portals Condominium
(RUC)

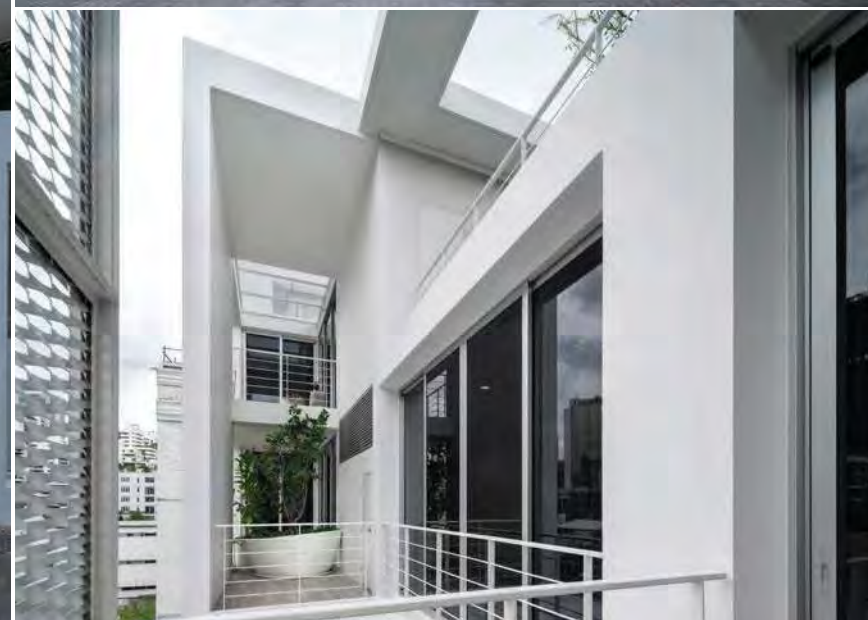




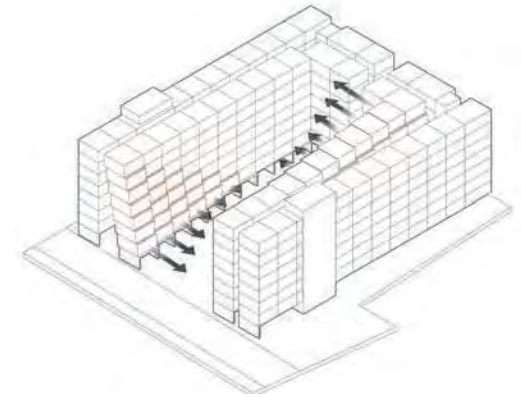
PELA CONDOMINIUM, WUTTHAKAT













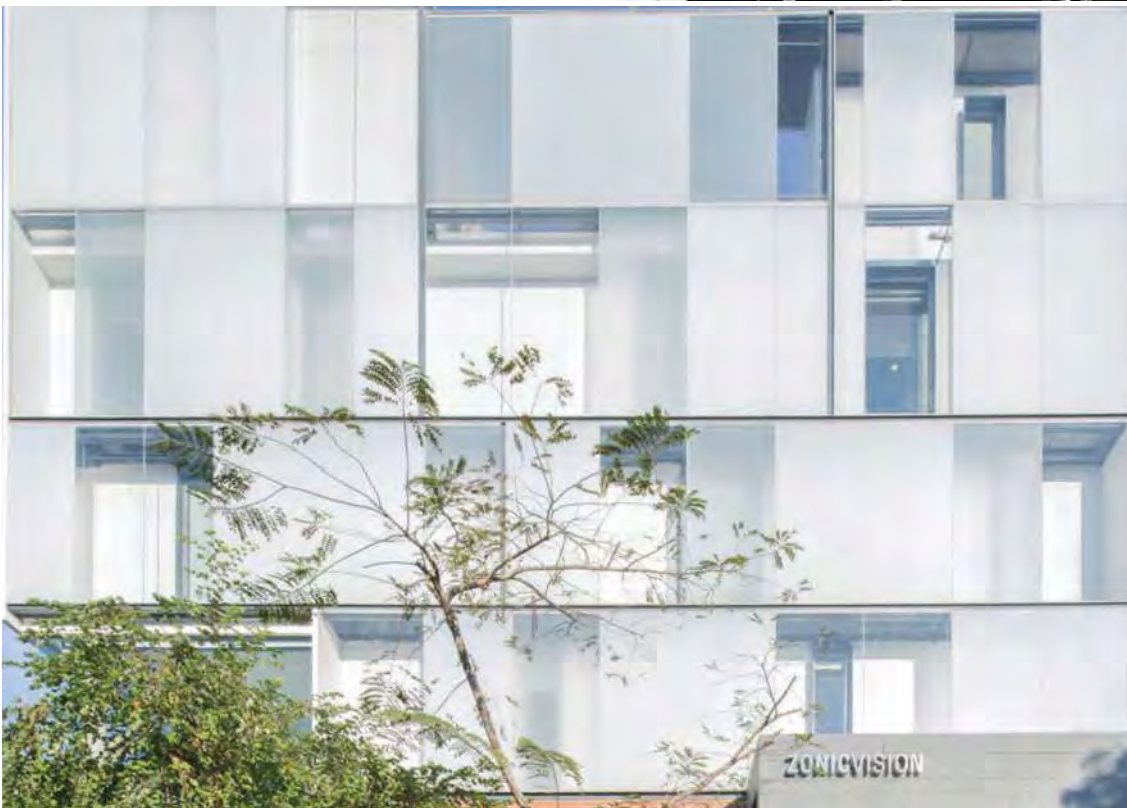
asa

2014

Citation Award, The Architectural Design Awards,
The Association of Siamese Architects under
Royal Patronage (ASA)

2015

Winner, Office Building Category,
Architizer A+Award, New York City.

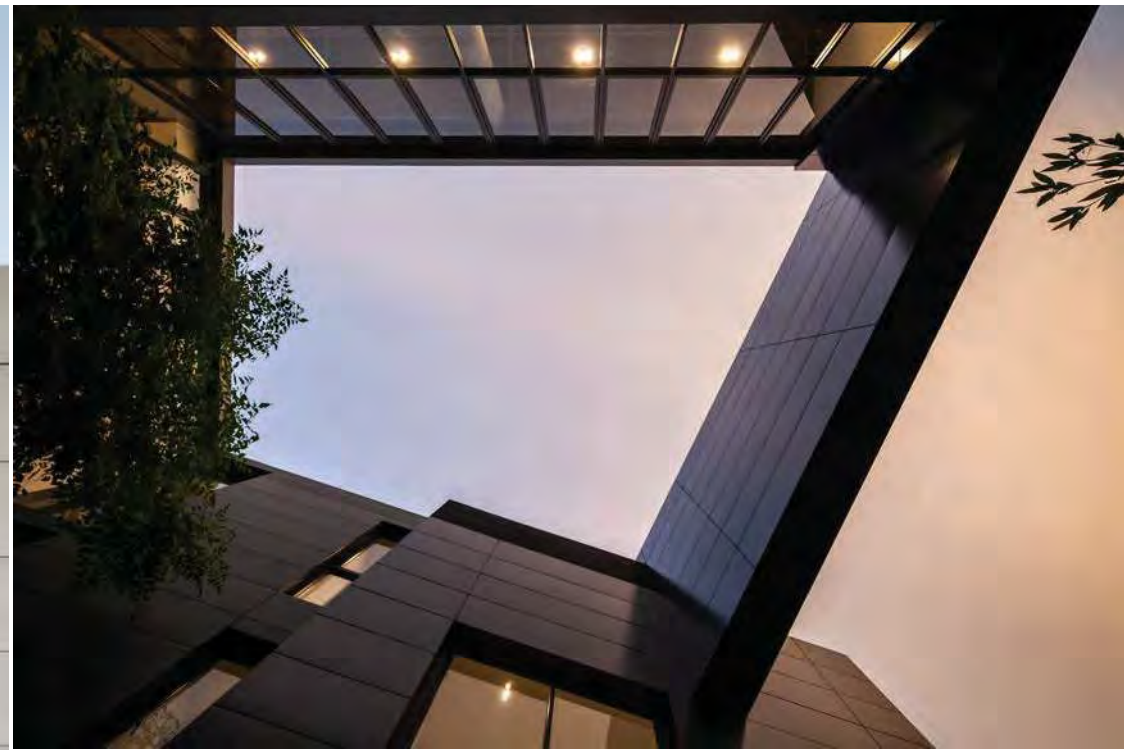


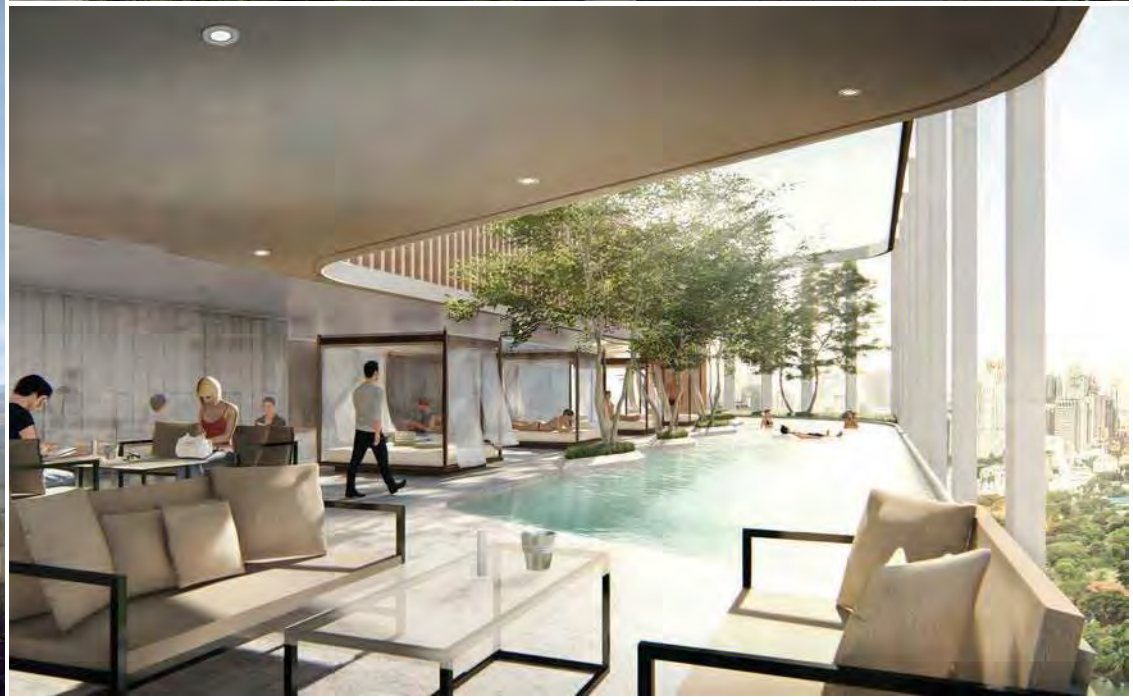
ZONIC VISION OFFICE, RAMA 3









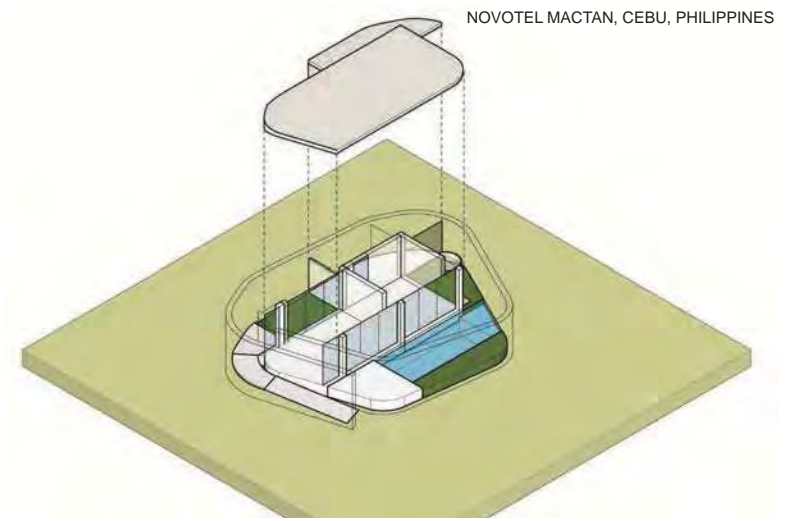




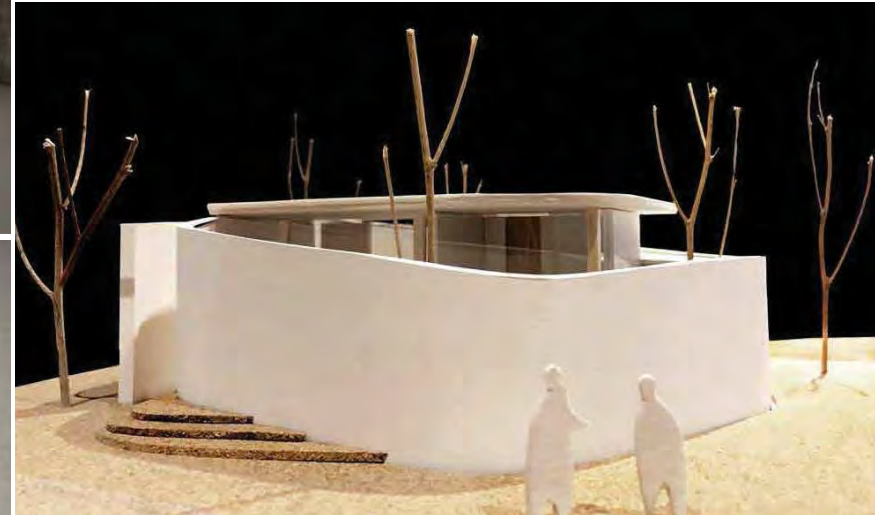








NOVOTEL MACTAN, CEBU, PHILIPPINES







asa



Wallpaper*

- 2015 Building of the year, Wallpaper* Magazine.
- 2016 Citation Award, The Architectural Design Awards,
The Association of Siamese Architects under
Royal Patronage (ASA)
- 2017 Citation Award, Commercial Building Category,
World Architectural Festival (WAF), Berlin.
- 2017 Honorable Mentioned,
Arcasia Awards for Architecture, India.

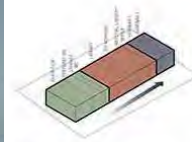




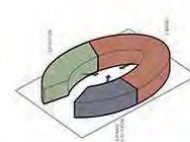




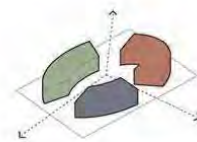
TCDC KHON KAEN



LINEAR PROGRAMING
Required programs are arranged logically, according to usage and function, resulting in a linear programming.



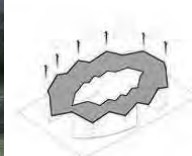
CENTRALIZED PROGRAMING
The looped form virtually connects all functions to one another as it creates a centralized court.

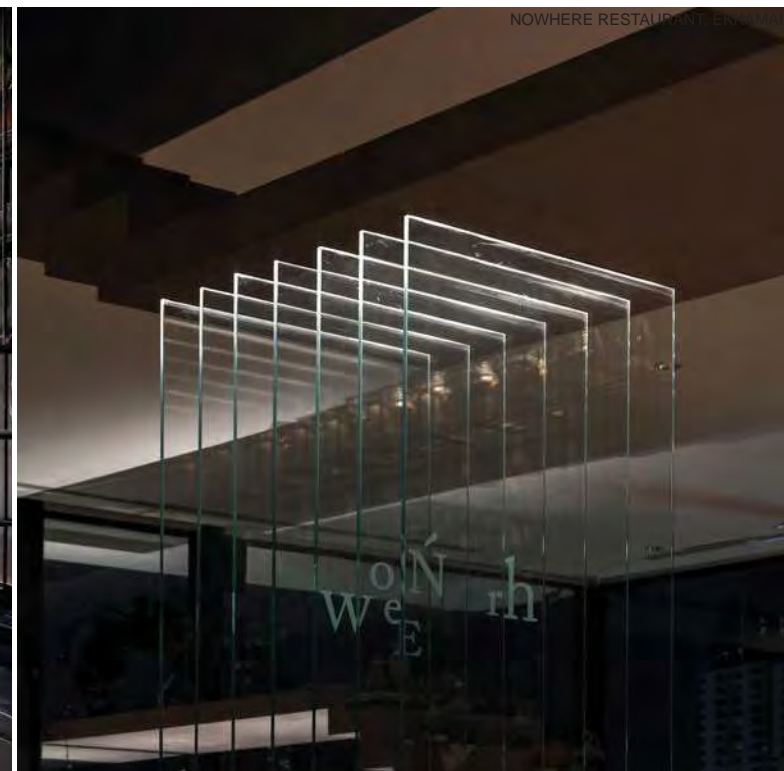


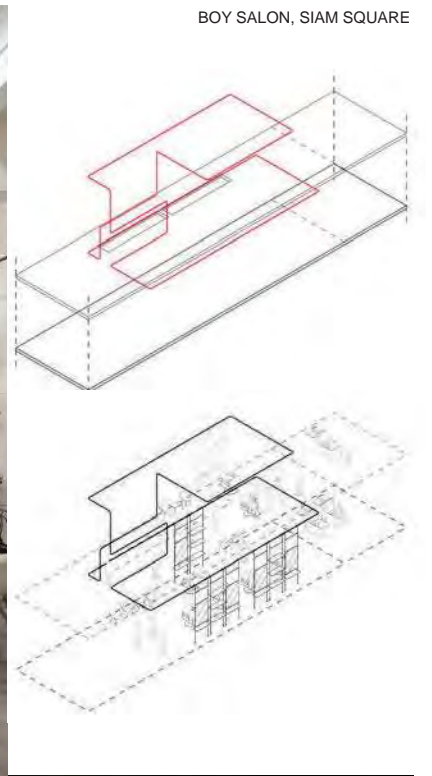
AXIS
3 main axis separating the 3 functions creates a connection between the architecture and its surrounding context and community.



COMMUNITY ENGAGEMENT
Opening up the building from all sides engages the local community equally, while drawing in the surrounding public into the space.









asa

2016 Gold Medal, The Architectural Design Awards,
The Association of Siamese Architects under
Royal Patronage (ASA)





